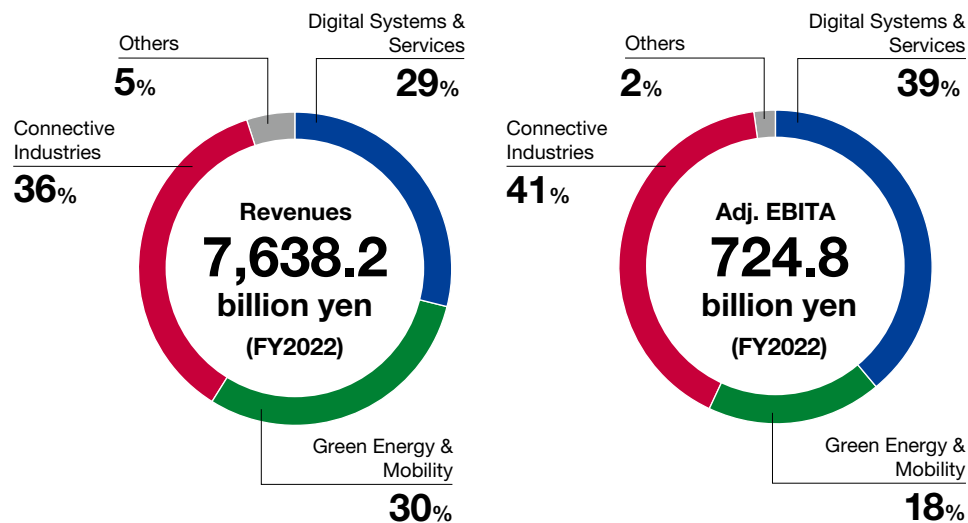


Business of the Hitachi Group

To become a global leader in the Social Innovation Business, Hitachi has strengthened its business portfolio. The three global trends of “Digital,” “Green,” “Connective” present remarkable opportunities for expansion. The core concept of Hitachi’s business sectors—Digital Systems & Services, Green Energy & Mobility and Connective Industries is to align assets with each trend’s high affinity.

The three business sectors work as One Hitachi to solve social issues and achieve sustainable growth with Lumada’s Customer Co-creation Framework.

Business Composition*1



Digital Systems & Services (DSS)

- Cloud Services Platforms BU
- Digital Engineering BU
- Financial Institutions BU
- Social Infrastructure Systems BU
- Hitachi Systems
- Hitachi Solutions

Green Energy & Mobility (GEM)

- Nuclear Energy BU
- Power Grids BU
- Hitachi Power Solutions
- Railway Systems BU

Connective Industries (CI)

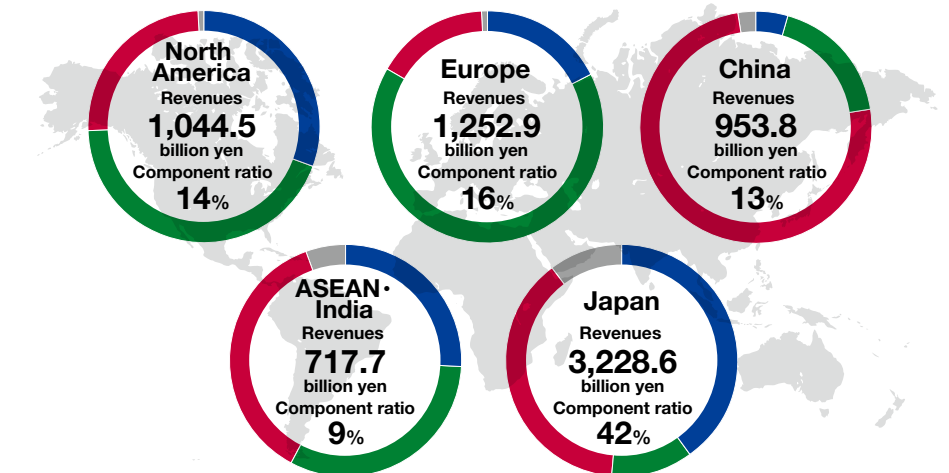
- Building Systems BU
- Hitachi Global Life Solutions
- Hitachi High-Tech
- Industrial Digital BU
- Water & Environment BU
- Hitachi Industrial Products
- Hitachi Industrial Equipment Systems

Financial Results*1

Revenues	Adj. EBITA / Margin	Net income (attributable to Hitachi, Ltd. stockholders)
7,638.2 billion yen	724.8 billion yen/ 9.5%	641.7 billion yen
Lumada Business Revenues	Lumada Business Adj. EBITA Margin*2	EPS*3
1,960.0 billion yen	Approx. 14%	676 yen

Revenues by Region*1

- Digital Systems & Services
- Green Energy & Mobility
- Connective Industries
- Others



Other areas: revenues 440.7 billion yen, component ratio 6%

*1 Figures are for the continuing consolidated business (three sectors), excluding Hitachi Metals and Hitachi Construction Machinery, which were deconsolidated in FY2022, and Hitachi Astemo, which is scheduled to be deconsolidated in FY2023. The figures on this page are FY2022 results.

BU: Business Unit

*2 Adj. EBITA for the Lumada business includes equity method profits of Hitachi Construction Machinery.

*3 The weighted average number of shares for calculating the (basic) earnings per share is 948,247,986 shares.